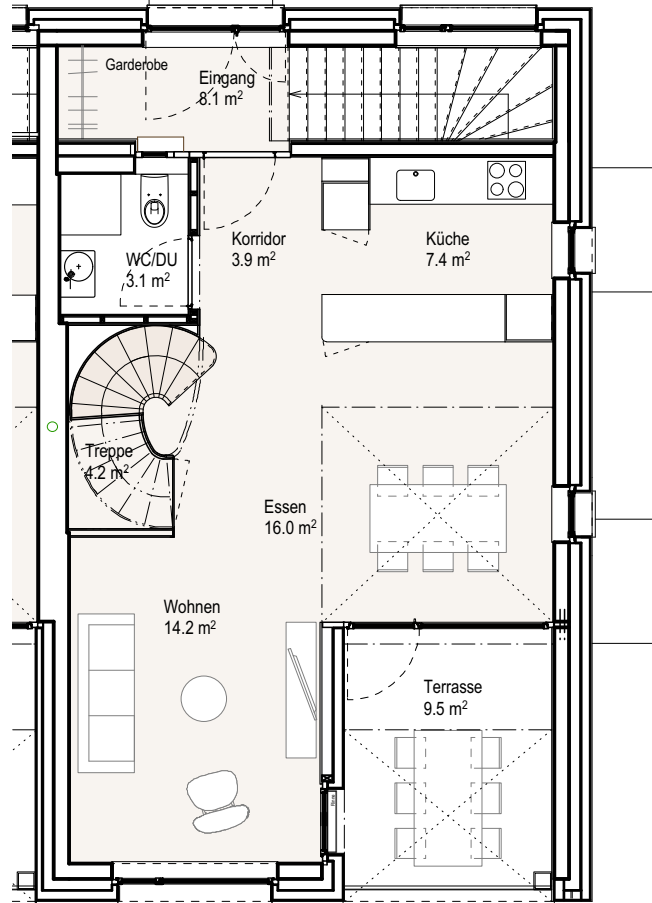
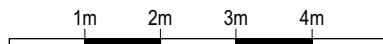
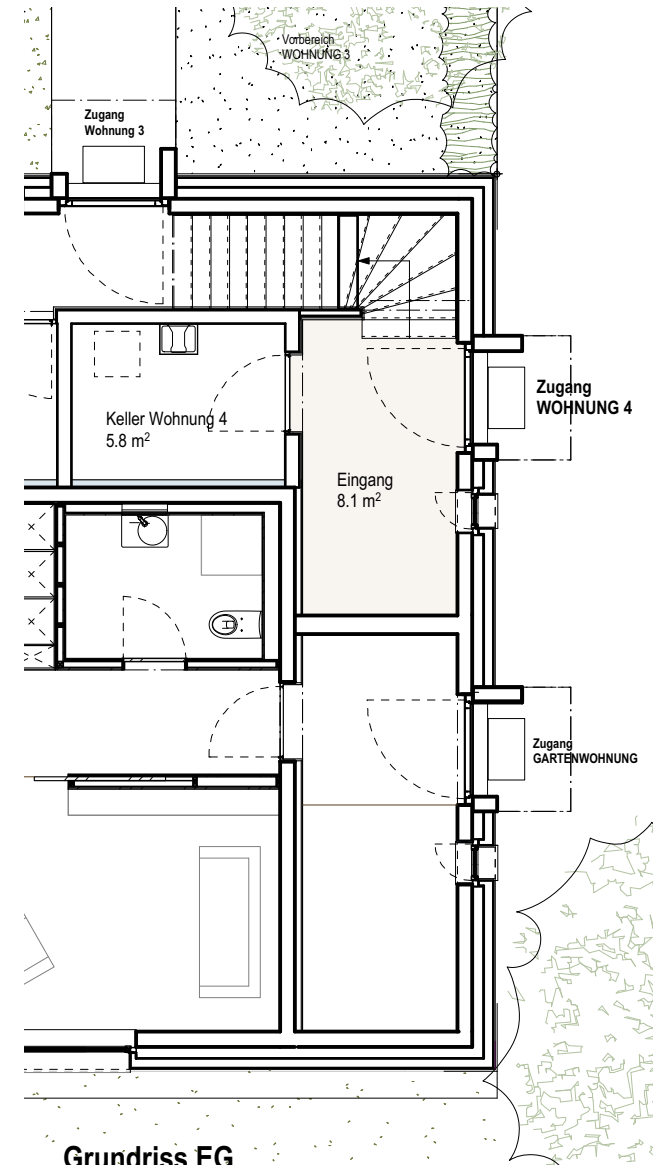


Grundriss 2. OG

Nettowohnfläche Wohnung 4  
(ohne Keller): 106.3 m<sup>2</sup>




Grundriss 1. OG



Grundriss EG

+/-0.00 = 444.58 m.ü.M

|   |  |  |   |             |
|---|--|--|---|-------------|
| Projekt:  | 1214.1 Ersatzneubau Mehrfamilienhaus, Flüelerstrasse 5, 6460 Altdorf |  |  |             |
| Bauherr:  | Bruno Baumann AG, Lehnplatz 3, CH-6460 Altdorf                       |  |   |             |
| A51.604   | 5.0 Ausführung   |  | Erstellt:   | 4.11.19 /ma |
|   | <b>Wohnung 4 - Grundrisse</b>  |  | Massstab:   | 1:100       |
|   |  |  | Plangrösse:   | A4          |
| Architektur Baumann AG, dipl. Arch. ETH/SIA, Lehnplatz 3, CH-6460 Altdorf, T +41 41 870 97 29, www.architektur-baumann.ch |  |  |   |             |